



Reading
Borough Council

Working better with you

WINTER SERVICE PLAN 2023 - 2024

Directorate of Economic Growth and Neighbourhood Services
Environmental and Commercial Services
Highways and Traffic
Services
Reading Borough Council
19 Bennet Road
Reading
Berkshire
RG2 0QX

Tel No. 0118 937 3787
Email Winter.Maintenance@reading.gov.uk

October 2023

CONTENTS

	Section	Page
1.	Introduction	1
2.	Policy Statement	4
3.	Client/Consultant/Contractor Relationship	5
4.	Decision Making	7
5.	Rostering of Supervisory and Operational Staff	9
6.	Road Hierarchy.....	10
7.	Footways and Cycleways	12
8.	Salting Operation and Salt	13
9.	Snow Clearance	14
10.	Grit Bins.....	15
11.	Plant and Vehicles.....	17
12.	Operational Communications	18
13.	Weather Forecasts.....	19
14.	Thermal Mapping and Ice Prediction	23
15.	Media Communications	24
16.	List of Appendices	25
	• Appendix A: Primary and Secondary Salting Routes	26
	• Appendix B: Guidance Notes for Duty Officers	31
	• Appendix C: Call Out Guidelines.....	32
	• Appendix D: Sample Decision Sheet.....	33
	• Appendix E: Footways - Snow Clearing/Pre-salting.....	34
	• Appendix F: Call Out Facilities	36
	• Appendix G: Grit Bin Locations	37
	• Appendix H: Location of structures to receive ‘double pre-salt’ salting .	39
	• Appendix I: Winter Service Cross Boundary Arrangements.....	40
	• Appendix J: Plan showing salting network, salting routes and locations of grit bins.....	41
	• Appendix K: Circulation List.....	42
	• Appendix L: References.....	44

READING BOROUGH COUNCIL

WINTER SERVICE PLAN 2023 - 2024

1 INTRODUCTION

- 1.1 This document has been produced in association with the documents “Well Maintained Highways” Code of Practice for Highway Maintenance (Published July 2005, revised 2009, 2010 & 2011) and “Lessons learned from the severe weather February 2009” report (revised 2010 & 2011), ‘Quarmby Report’ December 2010 and the ‘Well-managed Highway Infrastructure - Code of Practice’ October 2016, to describe the Council’s proposals for dealing with ice/snow deposits on the highway network over the winter period. It details information regarding the winter service, such as the roles and responsibilities of Reading Borough Council and the joint arrangement with Wokingham Borough Council, its Consultant Volker Highways (Wokingham Highways Alliance) and Winter Maintenance Contractor J H Cresswell and Sons Ltd.
- 1.2 Roads forming the Primary and Secondary precautionary salting networks are shown in Appendix A. These are the most heavily used strategic roads in the Borough, including the main bus routes and routes to the Royal Berkshire Hospital.
- 1.3 A winter service will be provided by the Council for 26 weeks of the year, starting on 1st October 2023 and ending on 31st March 2024. The formal winter service with Wokingham Borough Council and their Consultant, Volker Highways, commences on the 1st November 2023. However, as agreed at the pre-winter season meeting, Volker Highways provides an informal weather data monitoring service from the 1st October 2023. Should salting action be required during October, Reading Borough Council will be advised and the Winter Maintenance Contractor, J H Cresswell and Sons Ltd, will be instructed accordingly. Although the formal winter service ends on 31st March 2024, a similar arrangement will be in place to extend the weather data monitoring service to the end of April 2024 if unfavourable conditions persist.
- 1.4 Precautionary salting of the Primary network (refer to 1.12) and snow clearance on the Primary routes will be carried out based on information received from the weather forecasting service. The Secondary precautionary salting network (refer to 1.13) will only be salted and/or cleared of snow during particularly severe and prolonged hazardous winter weather conditions. The decision to instigate such action will be taken by the Winter Duty Officer based on information received from the weather forecasting service at the time. The primary precautionary salting network is risk assessed and comprises of principal roads, including main bus routes and routes to the Royal Berkshire Hospital. Likewise, the secondary precautionary salting network is risk assessed and comprises of the remaining bus route network and roads linking strategic routes.
- 1.5 Where the Council has been made aware of water being deposited on the highway as the result of an unforeseen incident, for example fire, road traffic accident, burst water main etc, salt shall be applied, during freezing conditions, to reduce

as far as possible the effects of frost, ice and other severe winter weather conditions on the highway.

- 1.6 Where water is being deposited on the highway from a watermain and Thames Water is aware of the problem, they will begin to salt the area affected until the issue has been resolved. Thames Water will continue to salt any visible leaks of their own plant whether or not the leak is on a Council salting network. Thames Water provides the Council with a list of known leak sites to be salted by their own contractor.
- 1.7 Spreading of a proprietary material/grit/salt on Town Centre footways, as detailed in Appendix E, will be carried out based on forecast information received from the weather forecasting service at the time. The decision to spread a proprietary material/grit/salt in the town centre is made and carried out by the Council.
- 1.8 For Primary and Secondary precautionary salting routes, response and treatment times are 1 hour and 3 hours respectively. This means that the Contractor must commence salting within 1 hour of receiving the winter gritting decision/instruction and complete all of the salting routes within 3 hours of leaving their depot.
- 1.9 As the Highway Authority, Reading Borough Council has a legal duty under Section 41 (Clause 1A) and Section 150 of the Highways Act 1980 to remove accumulations of snow, if causing a highway to become obstructed. Roads will therefore be cleared of snow in descending order of priority commencing with the First Priority network as described in Section 9 of this document.
- 1.10 In accordance with the recommendations of the “Lessons learned from the Severe Weather February 2009” report, the Council has introduced a Contingency Salting Network to cover the prolonged periods and heavy accumulations of snow and national salt shortages as described in 6.8.
- 1.11 Salt spread rates, where possible, will be adjusted to meet the directives set out as described in the “Quarmby Audit” report and adopted by Highways Authorities in December 2010.
- 1.12 The Primary precautionary salting network is approximately 120 km in length, represents approximately 30% of the total road network and comprises principal roads, including main bus routes and routes to the Royal Berkshire Hospital.
- 1.13 The Secondary precautionary salting network is approximately 42.02 km, represents approximately 11% of the total road network and is comprised of, the remaining bus route network and roads linking strategic routes.
- 1.14 There will be 48 grit bins provided at locations throughout the Borough for public use, with the inclusion of an additional grit bin on Christchurch Footbridge. The grit bins are maintained by the Contractor and are detailed in Appendix G. The provision of grit bins on the Borough’s public highway network has been reviewed and risk assessed. A grit bin has to achieve a minimum score of 60 points, using the Council’s approved grit bin risk assessment pro-forma, to qualify; 48 grit bins continue to meet these criteria. The grit bins are repaired and

replenished throughout the winter period as necessary. At the end of the winter, all grit bins are collected, cleaned and stored away during the summer months.

- 1.15 All cross-boundary primary and secondary precautionary salting routes correspond with neighbouring authorities precautionary salting routes, refer to paragraph 6.7.
- 1.16 The treatment of the M4 motorway and the on/off 4 slip roads at Junction 11 is the responsibility of Highways England and their agent. The Junction 11/A33 gyratory, A33 carriageway and bus lanes within the Borough boundary are included within the Council's Primary Salting Network.

2 POLICY STATEMENT

Reading Borough Council aim to provide a winter maintenance service to reduce so far as is reasonably practicable the effects of frost, ice and snow and other severe winter conditions on the public highway. The Council aim to provide travelling conditions as safe as reasonably practicable having regard to the road hierarchy detailed in Section 6 of this document, 'Well-managed Highway Infrastructure - Code of Practice' October 2016, as well as the Highways Act 1980 Section 41 (Clause 1A) and Section 150.

3 CLIENT/CONSULTANT/CONTRACTOR RELATIONSHIP

- 3.1 The Winter Maintenance Contract (2022/23-2027/28) specifies the Winter Service operations to be carried out within the Borough. The term contractor is J. H. Cresswell and Sons Ltd.
- 3.2 Innovative ideas proposed by the Client, Consultant, Contractor or DfT that provide improvements in quality of service and/or cost benefits will be adopted during the course of the winter season. An example would be adjusting salt spread rates during prolonged cold periods to maximise coverage and maintain adequate stock levels.
- 3.3 The following table indicates how the principal Winter Service responsibilities between Reading Borough Council, Wokingham Borough Council and its Consultant and the Contractor are split.

<u>ACTIVITY</u>	<u>RESPONSIBILITY</u>
Preparation of Winter Service Plan	Reading Borough Council
Road hierarchy priorities	Reading Borough Council
Salt purchase & storage	Contractor - J. H. Cresswell and Sons Ltd
Route mapping for precautionary salting network	Contractor - J. H. Cresswell and Sons Ltd
Route mapping for snow Clearance	Reading Borough Council / Contractor - J. H. Cresswell and Sons Ltd
Vehicles/plant and Accreditation	Owned and routinely maintained by Contractor
Winter Service Manager/ Decision making	Wokingham Borough Council (Volker Highways)
Day-to-day operations	Mainly Contractor - J. H. Cresswell and Sons Ltd with central co-ordination by Reading Borough Council/Wokingham Borough Council (Volker Highways) staff
Manning levels	As defined in the Winter Maintenance Contract (2022/23-2027/28).
Performance monitoring	Wokingham Borough Council (Volker Highways)/Reading Borough Council

ACTIVITY (CONT'D)RESPONSIBILITY (CONT'D)

Opening of Emergency
Operations Centre and
Emergency Planning Room

Reading Borough Council

Approval to commence
Operations in extreme
Snow conditions

Reading Borough Council

Weather
Forecasting Service

Vaisala / MeteoGroup

- 3.4 The Contractor will provide the Council with a list of any wet spots identified during each salting run, for the Council to investigate further. The Contractor will also provide the Council with a list of roads that have not been salted and the reason why e.g. road works/traffic management.

4 DECISION MAKING

- 4.1 Decision making is the responsibility of the Consultant's (Volker Highways) appropriate Duty Officer (**except in the cases detailed in paragraphs 4.11 and 4.12**). Each 24-hour period, during the winter service period, the Duty Officer will be on standby.

The Duty Officer also has a specific responsibility for liaising directly with the MeteoGroup duty forecaster and for disseminating information as described in Section 15.

- 4.2 The Duty Officer is responsible for receiving and taking the appropriate action on information relating to the winter service within the Borough. Using the forecast data provided, the Duty Officer will make his/her decision regarding precautionary salting as appropriate. To assist with this process, call out guidance notes are as detailed in Appendices B and C. The Winter Service Manager will also be available to give advice to the Duty Officer when required.
- 4.3 At approximately midday the Duty Officer logs on to MeteoGroup web page and inspects the rolling 36-hour forecast, graphs and appropriate maps. It is likely that the decision will be made at this time. If it is not possible to make a decision at midday the contractor is advised at this time that he is to wait for a decision following the evening update.
- 4.4 At approximately 1800 hours the Duty Officer logs on to MeteoGroup web page and inspects the forecast graph and text for any updated information. The forecast graph continues to have actual road surface temperatures plotted every hour for a rolling 36-hour period. This information can be obtained at any time by the Duty Officer by logging on to the web page. If a decision still cannot be made it may be necessary for the Duty Officer to consult the weather forecaster.
- 4.5 It is the responsibility of each Duty Officer to record all action taken on the justification forms and file for future reference.
- 4.6 The Duty Officer's decision is recorded on a decision sheet as shown in Appendix D, which is disseminated and filed for future reference.
- 4.7 When snow is forecast the snow clearance strategy is to be controlled by the Council in consultation with Volker Highways. In times of prolonged severe weather staff from the Council will liaise directly with the contractor in order to direct operations in the most effective way possible.
- 4.8 The Contractor is contacted via email and mobile phones, which are manned 24 hours per day. The daily decision sheets are emailed to the contractor by Volker Highways to confirm the instruction.
- 4.9 The daily decision sheets are provided by Volker Highways to the Council, electronically. The decisions are also disseminated within the Council and placed on the appropriate social media platform to inform the public.

- 4.10 Appropriate training is provided regularly for all Duty Officers, particularly with regard to technological improvements in forecasting techniques and the ice prediction system.
- 4.11 Where one of the emergency services contacts the Council requesting a one off gritting following either a road traffic accident, a fire resulting in localised excess water or a water leak, Streetcare Services will instruct during normal working hours or, if out of hours, The Answering Service (TAS) will instruct accordingly.
- 4.12 The Town Centre footway / pavement areas, listed in Appendix E, are treated by the Council's Streetcare Services. The decision whether to treat these is taken by Streetcare Services as outlined in Section 7.

5 ROSTERING OF SUPERVISORY AND OPERATIONAL STAFF

- 5.1 Wokingham Borough Council has employed Volker Highways to act as Highways and Transportation Consultant's whose role is to act as the Winter Service Manager. As part of the above agreement Reading Borough Council have a joint arrangement for Volker Highways to provide a winter decision making service.
- 5.2 The Consultant's team of Duty Officers is rostered to be on standby for the winter period, which is generally November to March inclusive. However, as agreed at the pre-winter season meeting, Volker Highways will be providing an informal weather data monitoring service/Duty Officer standby arrangement from the 1st October 2023 with a similar arrangement in place extended through to the end of April 2024 if unfavourable weather conditions persist.
- 5.3 A Winter Service Duty Officer is available 24 hours a day/ 7 days a week during his/her duty period. During normal office hours all Winter Service enquiries from members of the public should be directed to the Highways and Traffic Services - Highways Maintenance & Asset Management Team at Reading Borough Council, disseminated, and where the policy applies, information forwarded onto the Consultant's (Volker Highways).
- 5.4 Outside normal office hours, enquiries should be directed to the call out facility listed in Appendix F. (Officers' home telephone numbers will not be released to members of the public).
- 5.5 To continually improve the service, all public requests for salting and grit bins will be logged by the Council and forwarded to the Highways and Traffic Services - Highways Maintenance & Asset Management Team for assessment at the end of the winter season. Only in circumstances where emergency services make a request for salting will the Council's Winter Maintenance Contractor be mobilised before an assessment is completed. Further information concerning weather forecasts and the decision-making process are provided in Sections 4 and 13.
- 5.6 Rosters of all of the Contractor's staff involved in winter service operations are requested and made available by 1st October 2023.
- 5.7 All operators of salt spreading equipment are in possession of The City and Guilds Institute (scheme 6159) 'Winter Maintenance Operators Qualification' and all gritting plant conforms to current Transport Research Laboratory (TRL) Quality Assurance certification and accreditation. The Winter Maintenance Contractor provides the gritting vehicle calibration certificates to the Council in advance of the winter season.
- 5.8 Prior to the commencement of the winter period, each Duty Officer is provided with an information pack, which includes details of all appropriate telephone / mobile contacts, together with any additional information that may be appropriate.

6 ROAD HIERARCHY

- 6.1 The Primary precautionary salting network comprises all Category 1 and Category 2 roads and some heavily trafficked Category 3 roads which are defined as follows:

Category 1: The most important roads in the Borough in terms of volume of traffic carried, the proportion of heavy goods vehicles and their strategic function as principal links.

Category 2: The main distributor roads carrying significant volumes of traffic and public transport services. These are important thoroughfares distributing traffic from the strategic routes to residential and commercial areas.

Category 3: All other roads being roads providing local access within and between residential and commercial areas.

The total length of the Council's Primary Salting Network is approximately 120 km which represents approximately 30% of the highway network (excluding the motorway) within the Borough area.

- 6.2 The Secondary precautionary salting network is approximately 42.02 km in length and represents approximately 11% of the highway network. It is comprised of the remaining bus route network and roads linking strategic routes, which become hazardous if left untreated during prolonged periods of particularly severe weather conditions.
- 6.3 The Primary precautionary salting network is broken down into 3 individual salting routes. Each route is efficiently designed in order to comply with the maximum treatment time of 3 hours. In the event of the Snow Plan being activated the Primary precautionary salting network is broken down into 4 individual salting routes. The Primary precautionary salting routes to be treated by the Contractor are detailed in Appendix A.
- 6.4 The Secondary precautionary salting network is broken down into 4 salting routes. The Secondary salting routes to be treated by the Contractor are detailed in Appendix A.
- 6.5 The snow clearance routes comprise of 3 priority groups.

First All of the Category 1 network which are all the A Class roads in the Borough.

Second All of the Category 2 network which includes all of the B Class roads and some of the heavier trafficked C Class roads.

Third The remaining C class roads.

Snow clearance shall commence with the 'first priority' network and only when this has been cleared shall resources cascade to the 'second priority' followed by the 'third priority' networks.

Roads will therefore be cleared of snow in descending order of priority until such time as the 'first priority' network is clear. Only when this is clear shall resources cascade to the 'second priority' followed by the 'third priority' networks (see Section 9).

- 6.6 Performance of the Contractor in relation to response and treatment times is monitored to ensure satisfactory service delivery and contract compliance, where appropriate.
- 6.7 By agreement no cross Borough boundary salting and snow clearance will take place between Reading Borough Council and adjoining Unitary Authorities or vice versa, (refer to Appendix I).
- 6.8 In accordance with the recommendations of the "Lessons learned from the Severe Weather February 2009" report, the Council will introduce a Contingency Salting Network to cover any prolonged periods and heavy accumulations of snow and national salt shortages. The length of network to be treated will be determined based on the Council's salt stocks, the national salt stock situation and the anticipated period of severe weather.
- 6.9 The "Quarmby report" from 2010 gives guidance on efficient spread rates for preserving salt stocks. This is used when determining the rate at which salt is spread over the public highway during different weather conditions and salt levels.
- 6.10 The treatment of the M4 motorway and the on/off entry and exit slip roads at Junction 11 is the responsibility of the Highways England and their agent. The M4 Junction 11/A33 gyratory, A33 carriageway and bus lanes within the Borough boundary are included within the Council's Primary Salting Network.

7 FOOTWAYS AND CYCLEWAYS

- 7.1 The Council does not precautionary salt any of its footway network, however if snow is predicted to lay for a prolonged period, then the Town Centre area, as detailed in Appendix E, will be treated with a proprietary material/grit/salt to prevent snow and ice forming. The footways listed in Appendix E are treated with a proprietary material/grit/salt as they have a high pedestrian footfall.
- 7.2 The decision to treat the footways listed in Appendix E is taken by the Council's Streetcare Services. This work is also directly carried out by Streetcare Services.
- 7.3 Streetcare Services usually require approximately 3 hours' notice to prepare the equipment, product and staff for the works. Once the spreading of a proprietary material/grit/salt has started it takes approximately 1.5 hours to cover the route.
- 7.4 The Council has 2 hand operated snow ploughs which will be deployed on town centre footways, over Reading and Caversham Bridges and over the Christchurch Bridge, in the event of heavy accumulations of snow. On completion of these locations a decision will be made on cascading down to other high footfall areas based on a dynamic risk assessment reflecting conditions prevailing at the time.
- 7.5 Cyclists can continue to cycle in winter but are advised to dress appropriately, use mudguards and lights, consider tyres (the wider the better) and commuting by bicycle can be comfortable and efficient. It is important to make a safety assessment particularly during periods of prolonged hazardous conditions, (refer to Council's Snow Plan). The Council does not precautionary grit / salt shared footways and remote cycleways when frost, ice or prolonged hazardous conditions are forecast, with the exception of shared carriageway / cycleway routes on the primary and secondary salting network (including Shinfield Road Active Travel Cycle Lane). Being part of the carriageway, shared carriageway/cycleway routes on the primary and secondary precautionary salting route networks will be salted by default in accordance with the Winter Service Plan.

Should individuals make the decision to cycle during hazardous winter conditions the Council recommend that they take the necessary precautionary measures for the prevailing conditions.

8 SALTING OPERATIONS AND SALT

Response time

- 8.1 Throughout the winter service period the Contractor must start salting within 1 hour of receiving the instruction from the Duty Officer or at the time specified.
- 8.2 Each primary precautionary salting route is designed so that treatment can be completed in a maximum of 3 hours from the time of leaving the depot.
- 8.3 Salt complying with BS3247 shall be supplied by the Contractor and stored at Aldermaston. It is a contractual requirement that appropriate salt stockpiles are in place by 1st October each year.

	Minimum Quantity	Minimum Quantity	Minimum Quantity	Minimum Quantity
Quantity	1 st October (100%)	31 st December (100%)	28 th February (100%)	31 st March (66%)
Salt Total	900 tonnes	900 tonnes	900 tonnes	600 tonnes

- 8.4 All of the salt stock is stored in the open at Aldermaston, covered by proprietary sheeting.
- 8.5 Salt shall normally be applied in accordance with the “Quarmby Report” unless there are severe prolonged periods of snow or low national salt stocks. In such situations an appropriate spread rate will be implemented by the Contractor as agreed by the Council in consultation with the Consultant, Volker Highways, the Contractor and the salt supplier.
- 8.6 Bridge decks are given a double precautionary salting as the surface temperatures get much colder than those of regular roads. The bridges that are given a double precautionary salt are listed in Appendix H.

Motorways

- 8.7 The treatment of the M4 motorway and the on/off slip roads at Junction 11 is the responsibility of the Highways England and their agent. The M4 Junction 11/A33 gyratory, A33 carriageway and bus lanes within the Borough boundary are included within the Council’s Primary Salting Network.

9 SNOW CLEARANCE

- 9.1 When conditions are such that snow clearance becomes necessary, an instruction will be given by the Duty Officer to the Contractor to commence the snow clearance operation. It is essential that snow ploughs are fitted without delay.
- 9.2 During prolonged severe weather when snow clearance becomes necessary, the Emergency Planning Officer will implement the Council's Snow Plan and open the Emergency Operations Centre (EOC) which will be staffed until conditions abate. During this time, all incoming calls relating to winter service operations will be directed by the EOC. Responsibility for instructing the Contractor will be passed from Volker Highways Duty Officer to the appropriate Council Officer.
- 9.3 The Council provides snow clearance routes for the Contractor to treat in accordance with the procedures outlined in the Snow Plan. The highway (carriageway) network is cleared in descending order of priority, concentrating on the clearance of the first priority network followed by other priority networks in accordance with the agreed policy. Certain highway (footway) areas in the Town Centre that are block paved will be treated using a proprietary material/grit/salt, these are shown in Appendix E.

The snow clearance route priorities are:

First	A33, A329 (including IDR), A4, A4074, A4155, A327.
Second	B3270, B480, B3031.
Third	All other remaining roads.

- 9.4 Following snow clearance operations, the routes will be inspected for damage. Details of the damage will be passed to Streetcare Services for preparation of estimates and damage repair.
- 9.5 In the case of prolonged periods and heavy accumulations of snow and/or a national salt shortage, the Council will implement a Contingency Salting Network. The network will be designed to deliver a risk based contingency service in line with the UK Road Groups Report "Lessons from the Severe Weather February 2009" report and new Code of Practice.

Motorways

- 9.6 The treatment of the M4 motorway and the on/off slip roads at Junction 11 is the responsibility of the Highways England and their agent. The M4 Junction 11/A33 gyratory, A33 carriageway and bus lanes within the Borough boundary are included within the Council's Primary Salting Network.

10 GRIT BINS

- 10.1 Grit bins are provided on the Borough's public highway network but only where they have achieved a minimum score of 60 out of a total of 85 points as previously assessed, using the grit bin risk assessment pro-forma (Appendix G refers to the approved grit bin locations). The grit bins are repaired and replenished throughout the winter period as necessary. At the end of the winter, all grit bins are collected, cleaned and stored away during the summer months.

Grit bin requests are evaluated on a risk-based scoring system using the following criteria in the risk assessment pro-forma:

- Not on roads already on the gritting network or nearby grit bin
- Gradient greater than 10%
- Severe bends not including junctions
- Close proximity to and falling towards a heavily trafficked main road
- Number of premises for which the road is only access
- Traffic density at peak times
- Roads with high vehicle usage and a gradient of 10% or more
- Shaded carriageways with a minimum gradient of 10%
- Side road leading onto a main road
- Known problem with water and/or frost hollows
- Access available from carriageway for filling

(To qualify, a grit bin requires a minimum score of 60 out of a total of 85 points).

- 10.2 Requested locations for grit bins on the public highway will be reviewed and evaluated on an annual basis before the start of the winter season. Any new requests will be required to achieve a minimum score of 60 out of a total of 85 points to qualify. (Grit bin locations which have been assessed previously will not be reassessed).
- 10.3 For non-public highway areas, stakeholders and other Council Directorates/Teams are advised to purchase their own grit bins and salt stocks, as well as to make their own arrangements to spread the salt, prior to the winter season. Stakeholders and Council Directorates/Teams can choose to contact Streetcare Services for a quote to supply grit bin(s) and/or salt. The stakeholder / Council Directorate/Team will need to make their own arrangements for salt spreading as appropriate.

- 10.4 The Council will support community groups & individuals who express an interest to fund the installation of additional grit bins and take on the maintenance liability by way of an appropriate Highway Licence.

It should be noted that Streetcare services and its Winter Maintenance Contractor/Consultant will give priority to delivering the winter service for the Borough's public highway network.

11 PLANT AND VEHICLES

- 11.1 The Council's Winter Maintenance Contractor owns and maintains all the equipment used for Winter Service operations with the exception of the footway ploughs and proprietary material hand-spreaders (Refer to 11.8).
- 11.2 Prior to the operational winter service period the Contractor will carry out a 'dry' run of each precautionary salting route, attach/remove snow ploughs to/from each vehicle and carry out calibration test to the equipment.
- 11.3 To be effective, salt must be spread evenly and at rates to suit prevailing weather conditions. Excessive salt spreading is undesirable on both environmental and economic grounds. To this end, it is essential that the spreading equipment is calibrated annually in accordance with BS 1622 and the controls marked accordingly for spreads of 8g/m² for normal pre-salting and 11g/m², 15g/m², 16g/m², 20g/m² and 40g/m² for more severe conditions in line with recommendations outlined in the Quarmby Report December 2010.
- 11.4 All winter service vehicle drivers are issued with mobile phones for communication.
- 11.5 All of the Contractor's staff are qualified to City and Guilds Local Government Management Board 6157 now superseded by City and Guilds 6159 for salting and snow clearance operations.
- 11.6 Details of all routes including maps are kept in each vehicle.
- 11.7 A small, towable salt spreader is used on narrow roads where the larger winter service vehicles cannot manoeuvre or travel along due to road widths, parked vehicles etc.
- 11.8 The Council own two hand operated footway snow ploughs and several proprietary material hand-spreaders to reduce the effects and lower the risk of snow and ice accumulations in the Town Centre block-paved areas (refer to Appendix E).

12 OPERATIONAL COMMUNICATIONS

- 12.1 All winter service vehicle drivers are in contact with the Contractor's depot via mobile phones in order that instructions can be passed and current information relayed back directly from the vehicles.
- 12.2 The Contractor is required to provide the Council with a list of the contact details that are to be used by 1st October 2023.
- 12.3 The Contractor is required to provide the Council with a copy of the Daily Winter Service Action report after each salting run. This records details of each vehicle, driver, route number, start time, finish time, rate of spread and any other remarks.
- 12.4 In emergency situations when mobile phone networks are not available, the Council and Volker Highways have the use of airwave radios for communication purposes.

13 WEATHER FORECASTS

During the winter period, the Council will use the 'Roadmaster' forecasting service provided by MeteoGroup, from their UK HQ in Victoria, London. The information received each day includes the following:

- (i) detailed rolling 36-hour forecast
- (ii) evening update forecast
- (iii) site specific temperature graphs (three sites)
- (iv) early morning summary and preliminary forecast
- (iv) 2 - 10 day forecast

The 36-hour forecast is received at approximately midday each day. The main features of this forecast are as follows:

- (i) **Readiness Colour**
This is based on the traffic light system of colours; green, amber or red. The definitions are:

Green	No hazard expected.
Amber	RSTs below zero but road dry RST between 0 and +1C (inclusive)
	RST > +1C and < +2C with low confidence
Red	RSTs below zero with a hazard.
- (i) **Hazards**
This section includes the hazards causing the red or amber readiness colours as well as other weather hazards such as heavy rain, high winds or fog, which could accompany a green readiness colour. A qualifying time will be given for all hazards.
- (iii) **Minimum temperatures**
Minimum air and road temperatures for urban and rural areas are provided.
- (iv) **Confidence statements**

This consists of high, moderate or low confidence for each of the hazards described above, together with a qualifying statement. For example: low confidence regarding extent of showers this evening but high regarding road temperatures falling below zero.
- (v) **36-hour weather summary**

This is a general summary of the forecast for a rolling 36-hour period.

At approximately 1800 hours each evening, a forecast update is issued by MeteoGroup and can be viewed by the Duty Officer at home on a portable laptop computer. "If further information is required, the Duty Officer can make use of the 24-hour consultancy service provided by MeteoGroup - 0845 603 0563"

Example of a typical 24-hour summary forecast is shown overleaf on Pages 21 & 22.

24 HOUR SUMMARY FORECAST FOR Berkshire
FORECAST FOR MONDAY 11/10/2010 12:00 TO TUESDAY 12/10/2010 12:00

Headline	RSTS ABOVE ZERO
Confidence	HIGH

General Synopsis

This afternoon, it will be dry and bright with long periods of sunshine. Tonight, dry with the chance of some clearer breaks at first, but mist and low cloud will become extensive. Tomorrow morning, dry but with cloudy skies. RSTs above zero throughout the period.

Hazards and temperatures (Example)

	Berkshire	
Readiness Colour	GREEN	
Hoar Frost	N	HIGH
Ice	N	HIGH
Snow	N	HIGH
Snow Level (m)	N/A	
Drifting	N	HIGH
Heavy Rain	N	HIGH
Fog	N	HIGH
Freezing Rain	N	HIGH
Minimum Air Temp	7.5	
Bridgedeck min temp	9.0	
Urban Min RST	10.0	
Urban RST period < 0	N	
Min RST	9.0	
RST period < 0	N	

Snow Summary

None

Wind Table (Example)

Mon 11/10 12-18					Mon 11/10 18-00				Tue 12/10 00-06				Tue 12/10 06-12			
Domains	Dir	Avg mph	Exp Gust mph	Ext Gust mph	Dir	Avg mph	Exp Gust mph	Ext Gust mph	Dir	Avg mph	Exp Gust mph	Ext Gust mph	Dir	Avg mph	Exp Gust mph	Ext Gust mph
Berkshire County Wide	NE	13	28	31	NE	11	22	25	NE	9	20	23	NE	9	20	24
MeteoGroup UK.																
Forecaster																
Produced at					11-10-2010 10:38:39 BST											
Issued at					11-10-2010 12:31:12 BST											
Telephone					0845 603 0563											
Fax					020 7963 7579											
Visit RoadCast at																
www.roadcast.co.uk																

14 THERMAL MAPPING AND ICE PREDICTION

Reading Roads

- 14.1 Vaisala Ltd has undertaken thermal mapping across Berkshire, a technique for measuring and analysing the thermal characteristics of road surfaces. It is normally carried out under three different weather conditions, one of which is the extreme condition or night when skies are clear and winds light. The other weather conditions are known as intermediate and damped. Under extreme conditions, the maximum variation in road surface temperature is produced, this, together with the coldest absolute temperatures, leads to potentially hazardous road conditions. Under such conditions it is most important to be able to accurately predict road surface temperatures.
- 14.2 The information yielded from thermal mapping is used in conjunction with site specific forecasts to predict accurately the minimum temperature of road surfaces across the road network. This allows accurate decisions to be made not only about whether to salt or not but whether to salt only those roads that require treatment.
- 14.3 Thermal mapping has been used to produce data, which allows the pre-salting routes to be analysed objectively and to ensure the optimum location of road surface and atmospheric condition sensors.
- 14.4 Annual calibration checks on sensors are undertaken by the equipment supplier(s).
- 14.5 Every hour, information from these sensors is fed automatically into the Central Processing Unit at Vaisala's offices in Birmingham. The parameters recorded are, air temperature, humidity, precipitation, wind speed and direction, road surface condition (wet or dry) and depth temperature. Forecasts are produced by MeteoGroup based on this information. These forecasts when used in conjunction with the thermal mapping data forms one of the most sophisticated ice prediction systems in the U.K.
- 14.6 West Berkshire Council acts as lead authority on behalf of the Berkshire Unitary Authorities in respect of the co-ordination and procurement of contracts with Vaisala and MeteoGroup Ltd. The formulation of this alliance between the authorities is known as the Berkshire Consortium.
- 14.7 All six members of the Berkshire Consortium (consisting of the six Unitary Local Authorities within the former Berkshire County Council administrative area) have access to the ice detection equipment described above.
- 14.8 The Berkshire Consortium own weather stations situated within Berkshire and have a contract with Vaisala Ltd. Once the data is in a usable format it is passed on to MeteoGroup who will make the weather predictions. The nearest weather station for Reading is on the A329 Oxford Road (located outside Battle Library).

15 MEDIA COMMUNICATIONS

- 15.1 Liaison with the news media, particularly the local radio stations, The Breeze, BBC Radio Berkshire and Heart FM is of the utmost importance and will be maintained during periods of severe snowfall. This is to notify the public of any driving advice or road closures etc that will affect their journeys or safety. This contact will normally be directly with the Council's Press Office who will be fed information from Streetcare Services.
- 15.2 It is also desirable that communications with the local Police force is maintained. To this end, whenever an instruction to salt is issued by Volker Highways, a copy of the decision sheet will be emailed to the Thames Valley Police Headquarters at Kidlington who will then distribute the notification accordingly. Additional information will also be provided as appropriate to the motoring organisations during periods of snow clearance when it is essential that the travelling public are advised of current road conditions and cleared routes.
- 15.3 Information on winter gritting / salting and guidance on safer driving this winter on Reading roads together with a plan showing the roads that will be treated is published on the Council's website.
- 15.4 Information on the current policy and precautionary salting plans is available on the Council's website.
- 15.5 The 'Winter Service Plan 2023/2024' Committee Report, presented to the Housing Neighbourhoods and Leisure Committee, is available on the Council's website. This Report includes details on the review process carried out following the 2022/2023 winter season and updates to this Winter Service Plan for the 2023/2024 winter season.

16 LIST OF APPENDICES

	Page
Appendix A: Primary and Secondary Precautionary Salting Routes	26
Appendix B: Guidance Notes for Duty Officers	31
Appendix C: Call Out Guidelines.....	32
Appendix D: Sample Decision Sheet.....	33
Appendix E: Footways - Snow Clearance/Pre-salting	34
Appendix F: Call Out Facilities	36
Appendix G: Grit Bin Locations	37
Appendix H: Location of structures to receive a ‘double pre-salt’ salting.....	39
Appendix I: Winter service cross boundary arrangements	40
Appendix J: Plan showing salting network/routes and locations of grit bins	41
Appendix K: Circulation List	42
Appendix L: References	44

SUMMARY OF ROADS ON PRIMARY AND SECONDARY PRECAUTIONARY SALTING NETWORK

TABLE 1 - COUNCIL'S PRIMARY SALTING NETWORK

ROAD NAME	SECTION
A33	ALL - INC MRT BUS LANES / BYPASS - SOUTH OAK WAY R/BOUT
ALEXANDRA ROAD	PART - UPPER REDLANDS ROAD TO ADDINGTON ROAD
ADDINGTON ROAD	PART - REDLANDS ROAD TO CRAVEN ROAD
B3270	ALL
BAGNALL WAY	ALL
BASINGSTOKE ROAD	ALL
BATH ROAD	ALL
BEDFORD ROAD	PART - OXFORD ROAD TO CHATHAM STREET
BERESFORD ROAD	ALL
BERKELEY AVENUE	ALL
BLAGRAVE STREET	ALL
BRIANTS AVENUE	ALL
BRIDGE STREET, CAVERSHAM	ALL
BRIDGE STREET, READING	ALL
BUCKINGHAM DRIVE	ALL
BURGHFIELD ROAD	ALL
CASTLE HILL	ALL
CASTLE STREET	ALL
CAVERSHAM PARK ROAD	ALL
CAVERSHAM ROAD	ALL
CHAPEL HILL	ALL
CHATHAM STREET	ALL
CHEAPSIDE	ALL
CHRISTCHURCH GARDENS	PART - NORTHUMBERLAND AVENUE TO BASINGSTOKE ROAD
CHRISTCHURCH ROAD	ALL
CHURCH ROAD, CAVERSHAM	ALL
CHURCH STREET, CAVERSHAM	ALL
CITY ROAD	ALL
CORWEN ROAD	ALL
COW LANE	ALL
CRAVEN ROAD	ALL
CRESSINGHAM ROAD	ALL
CROWN STREET	ALL
DEE ROAD	ALL
DONKIN HILL	ALL
DUKE STREET	ALL
DWYER ROAD	ALL
ELDON ROAD	ALL
ELM ROAD	ALL
EVESHAM ROAD	PART - SOUTHDOWN ROAD TO BUCKINGHAM DRIVE
FORBURY ROAD	ALL
FRIAR STREET	ALL
GEORGE STREET, CAVERSHAM	ALL

SUMMARY OF ROADS ON PRIMARY AND SECONDARY PRECAUTIONARY SALTING NETWORK

TABLE 1 - COUNCIL'S PRIMARY SALTING NETWORK CONT'D...

ROAD NAME	SECTION
GILLETTE WAY	ALL
GOSBROOK ROAD	PART - PROSPECT STREET TO BRIANTS AVENUE
GREAT KNOLLYS STREET	PART - CAVERSHAM ROAD TO NORTH STREET
GREYFRIARS ROAD	ALL
GROVELANDS ROAD	ALL
GUN STREET	ALL
GWEAL AVENUE	ALL
HARTLAND ROAD	ALL
HEMDEAN ROAD	PART - CHURCH STREET TO OAKLEY ROAD
HENLEY ROAD	ALL
HIGH STREET	ALL
HILDENS DRIVE	ALL
HOLYBROOK ROAD	ALL
HONEY END LANE	ALL
IDR INNER RELIEF ROAD	ALL
KENDRICK ROAD	ALL
KENTWOOD HILL	ALL
KING STREET	ALL
KING'S ROAD, READING	ALL
LIEBENROOD ROAD	ALL
LINDISFARNE WAY	ALL
LONDON ROAD	ALL
LONDON STREET	ALL
LOWER ELMSTONE DRIVE	ALL
LOWER HENLEY ROAD	ALL
LOWFIELD ROAD	ALL
MANOR FARM ROAD	PART - GWEAL AVE TO GILLETTE WAY
MARKET PLACE	ALL
MAYFAIR	ALL
MILL LANE	ALL
MINSTER STREET	ALL
MOUNT PLEASANT	ALL
NORCOT ROAD	ALL
NORTH STREET, READING	ALL
NORTHERN WAY	ALL
NORTHUMBERLAND AVENUE	ALL
OVERDOWN ROAD	ALL
OXFORD ROAD	ALL
PARK LANE	ALL
PELL STREET	ALL
PEPPARD ROAD	EXCLUDING LOOP LOWFIELD ROAD TO BUCKINGHAM DRIVE
PEPPER LANE	ALL
PIERCES HILL	ALL

SUMMARY OF ROADS ON PRIMARY AND SECONDARY PRECAUTIONARY SALTING NETWORK

TABLE 1 - COUNCIL'S PRIMARY SALTING NETWORK CONT'D...

ROAD NAME	SECTION
PORTMAN ROAD	ALL
PRIEST HILL	ALL
PROSPECT STREET, CAVERSHAM	ALL
QUEEN'S ROAD, READING	ALL
READING BRIDGE	ALL
REDLANDS ROAD	ALL
RICHFIELD AVENUE	ALL
ROSE KILN LANE	ALL
ROTHERFIELD WAY	ALL
SOUTHDOWN ROAD	PART - ROTHERFIELD WAY TO EVESHAM ROAD
RUSSELL STREET	ALL
SCHOOL ROAD	ALL
SHEPHERDS LANE	PART - UPPER WOODCOTE ROAD TO WOODCOTE WAY
SHINFIELD ROAD	ALL
SIDMOUTH STREET	PART - LONDON ROAD TO QUEEN'S ROAD
SILVER STREET	ALL
SOUTHAMPTON STREET	ALL
SOUTHCOTE LANE	ALL
ST MARYS BUTTS	ALL
ST PETERS HILL	ALL
ST SAVIOURS ROAD	PART - BERKELEY AVENUE TO HOLYBROOK ROAD
STANSHAW ROAD	ALL
STATION HILL	ALL
STATION ROAD	ALL
THE FORBURY	PART - VALPY STREET TO MARKET PLACE
THE MEADWAY	ALL
THE TRIANGLE	PART - ST MICHAELS ROAD TO WALNUT WAY
TILEHURST ROAD	ALL
TROOPER POTTS WAY	ALL
TUDOR ROAD	ALL
UPPER WOODCOTE ROAD	ALL
VALPY STREET	ALL
VASTERN ROAD	ALL
WATER ROAD	ALL
WATLINGTON STREET	PART - QUEEN'S ROAD TO KING'S ROAD
WELDALE STREET	PART - CAVERSHAM ROAD TO NORTH STREET
WENSLEY ROAD	PART - HOLYBROOK ROAD TO HOSPITAL ROUNDABOUT
WEST STREET	ALL
WHITLEY STREET	ALL
WHITLEY WOOD LANE	ALL
WHITLEY WOOD ROAD	ALL
WIGMORE LANE	ALL
WOKINGHAM ROAD	ALL
WOODCOTE ROAD	ALL
WOODCOTE WAY	ALL

SUMMARY OF ROADS ON PRIMARY AND SECONDARY PRECAUTIONARY SALTING NETWORK

TABLE 2 - COUNCIL'S SECONDARY SALTING NETWORK

ROAD NAME	SECTION
ACRE ROAD	ALL
ADDINGTON ROAD	PART - CRAVEN ROAD TO ERLEIGH ROAD
ALBERT ROAD	ALL
ALL HALLOWS ROAD	ALL
ALPINE STREET	ALL
AMERSHAM ROAD	ALL
ARMOUR HILL	ALL
ARMOUR ROAD	ALL
ASHAMPSTEAD ROAD	ALL
BEECH ROAD	ALL
BENNET ROAD	ALL
BERKSHIRE DRIVE	ALL
BLAGDON ROAD	ALL
BLENHEIM ROAD (CAVERSHAM)	ALL
BUCKLAND ROAD	ALL
CHURCH END LANE	ALL
CIRCUIT LANE	PART - SOUTHCOTE LANE TO SILCHESTER ROAD
COCKNEY HILL	ALL
COLEY AVENUE	ALL
CONISBORO AVENUE	PART - ALBERT ROAD TO UPLANDS ROAD
CONNAUGHT ROAD	PART - TILEHURST ROAD TO PRINCE OF WALES AVENUE
CORBRIDGE ROAD	ALL
COURTENAY DRIVE	ALL
CRANBURY ROAD	PART - TILEHURST ROAD TO PRINCE OF WALES AVENUE
CRESCENT ROAD	ALL
EASTERN AVENUE	PART - CRESCENT ROAD TO WHITEKNIGHTS ROAD
ELGAR ROAD	ALL
ELGAR ROAD SOUTH	ALL
ELMHURST ROAD	ALL
ELMSTONE DRIVE	ALL
ERLEIGH ROAD	ALL
EVESHAM ROAD	PART - SOUTHDOWN ROAD TO GROVE ROAD
GOSBROOK ROAD	PART - BRIANTS AVENUE TO STAR LANE
GROVE ROAD	ALL
HEXHAM ROAD	PART - NORTHUMBERLAND AVENUE TO CORBRIDGE ROAD
HIGHMOOR ROAD	PART - ALBERT ROAD TO WOODCOTE ROAD
HOGARTH AVENUE	ALL
HUNTERS CHASE	ALL
IMPERIAL WAY	ALL
ISLAND ROAD	ALL

SUMMARY OF ROADS ON PRIMARY AND SECONDARY PRECAUTIONARY SALTING NETWORK

TABLE 2 - COUNCIL'S SECONDARY SALTING NETWORK CONT'D...

ROAD NAME	SECTION
KENAVON DRIVE	ALL
KENSINGTON ROAD	PART - TILEHURST ROAD TO PRINCE OF WALES AVENUE
KIDMORE END ROAD	ALL
KIDMORE ROAD	ALL
KILN ROAD	PART - CAVERSHAM PARK ROAD TO MARCHWOOD AVENUE
KINGS MEADOW ROAD	PART - VASTERN ROAD TO NAPIER ROAD
LINDEN ROAD	ALL
MICKLANDS ROAD	ALL
NEW LANE HILL	PART - HOGARTH AVENUE TO THE MEADWAY
NAPIER ROAD	ALL
NEWCASTLE ROAD	PART - NORTHUMBERLAND AVENUE TO CORBRIDGE ROAD
NORTHBROOK ROAD	ALL
OAKLEY ROAD	ALL
OAK TREE ROAD	ALL
OLD HONEY END LANE	ALL
PROSPECT STREET, READING	ALL
RICHMOND ROAD (CAVERSHAM)	ALL
SHEPHERDS LANE	PART - WOODCOTE WAY TO KIDMORE ROAD
SILCHESTER ROAD	PART - CIRCUIT LANE TO FAIRCROSS ROAD
SPEY ROAD	ALL
ST. ANNE'S ROAD	ALL
ST. MICHAEL'S ROAD	ALL
STAR ROAD	ALL
SURLEY ROW	PART - ROTHERFIELD WAY TO ST. BARNABAS ROAD
SWALLOWFIELD DRIVE	ALL
TAY ROAD	PART - DEE ROAD TO SPEY ROAD
TREDEGAR ROAD	ALL
THE MOUNT, CAVERSHAM	PART - ALBERT ROAD TO PRIEST HILL
UPLANDS ROAD	ALL
USK ROAD	ALL
WAVERLEY ROAD	ALL
WENSLEY ROAD	PART - HOSPITAL ROUNDABOUT TO END/LOOP
WESTERN ELMS AVENUE	ALL
WESTWOOD ROAD	ALL
WESTWOOD GLEN	ALL
WHITEKNIGHTS ROAD	ALL
WILSON ROAD	ALL
WOLSELEY STREET	ALL

WINTER SERVICE 2020/2021**GUIDANCE NOTES FOR DUTY OFFICERS****1. FORECAST INFORMATION**

- (i) At approximately midday log on to MeteoGroup web page and inspect rolling 36-hour forecast, graphs and appropriate maps. It is likely that your decision will be made at this time. If it is not possible to make a decision at midday the contractor must be advised at this time that he is to wait for a decision following the evening update.
- (ii) At approximately 1800 hours log on to MeteoGroup web page and inspect forecast graph and text for any updated information. The forecast graph will continue to have actual road surface temperatures plotted every hour for a rolling 36-hour period. This information can be obtained at any time by logging on to the web page. If a decision still cannot be made it may be necessary to consult the weather forecaster.
- (iii) It is the responsibility of each Duty Officer to record all action taken on the justification forms and file for future reference.

2. COMMUNICATIONS

- (i) If the Duty Officer needs to communicate with the Duty Manager, then contact should initially be made by mobile phone.
- (ii) The Duty Officer and the Duty Manager should keep each other aware of their movements if they are likely to be unable answer the mobile phone for any length of time.
- (iii) The Duty Officer will also be responsible for sending a fax/email message to the Police, local radio stations and neighbouring authorities informing them of the decision made concerning precautionary salting.

3. ROLE OF THE DUTY MANAGER

The Duty Manager will be available to give advice to the Duty Officer when required.

WINTER SERVICE CALL OUT GUIDELINES

FORECAST ROAD CONDITIONS

1. Road Surface Dry
2. Wet patches due to seepage etc.
3. Road surface wet but may dry
4. Road surface wet
5. Road surface dry but may become wet

FORECAST WEATHER

- A. Road Surface Temperature (RST) above freezing
(i) + 4°C or above
(ii) above 0°C, below +4°C
- B. RST at or below 0°C
(i) 0°C to -3°C
(ii) below -3°C
- C. B(i) or B(ii) with rain beforehand
- D. Hoar Frost.
- E. Freezing fog
- F. Freezing rain
- G. Snow
(i) light falls up to 30mm
(ii) falls over 30mm

RECOMMENDED ACTION

- a) No precautionary salting.
- b) Partial salt: wet patches, major structures, high ground etc.
- c) Inspection at a time to enable any necessary action to be taken before conditions become critical.
- d) Full pre-salt to be completed before onset of freezing conditions.
- e) Full pre-salt after rain has finished.
- f) Salting crews to remain in Depot awaiting instructions.
- g) Road conditions to be monitored by Duty Officer using ice prediction system.

ROAD CONDITIONS	FORECAST									
	A (i)	A (ii)	B (i)	B (ii)	C	D	E	F	G (i)	G (ii)
1	a	a	a	b		d	d		d	df
2	a	g	b	b		d	d		d	df
3	a	g	c	bc		d	d		d	df
4	a	g	d	d	e	d	d	df	d	df
5	a	g	g	b	e	d	d		d	df
DUTY OFFICER TO DETERMINE TIMING OF SALTING RUNS AND RATES OF SPREAD DEPENDING ON FORECAST DETAILS										

THE ABOVE TABLE IS FOR GUIDANCE ONLY

DUTY FORECASTER SHOULD BE CONSULTED AS NECESSARY.

SAMPLE DECISION SHEET



WOKINGHAM
BOROUGH COUNCIL



WINTER SERVICE DECISION SHEET 2013/14 - Ref 201314/089

Date Decision made: Wednesday 19th December 2013

Time Decision made: 12.46hrs

Winter Duty Officer:

Contact No.

	Wokingham Borough Council Network		Reading Borough Council Network	
Routes	Time Action Required	Spread Rate Required	Time Action Required	Spread Rate Required
Primary Routes	21:00	7gm/2	21:00	10gm/2
Secondary Routes	N/A	No Action	N/A	No Action
Third Tier	N/A	No Action	N/A	No Action
Footways/Cycletracks	N/A	No Action	N/A	No Action

Readiness Colour Alert	Green	Amber	Red
			-1.5

COMMENTS :

Action required for both Wokingham and Reading BC areas

EXTRACT FROM 24HR WEATHER FORECAST:

Sunny spells this afternoon. This evening, cloud will increase with a band of showers spreading from the west - some of them heavy. These showers should move away to the east by approximately 2000-2100 to leave it dry with largely clear skies through the remainder of the night. RSTs dropping quite quickly after the showers, falling below zero with ice. Tomorrow, it will be bright and breezy.

APPENDIX E

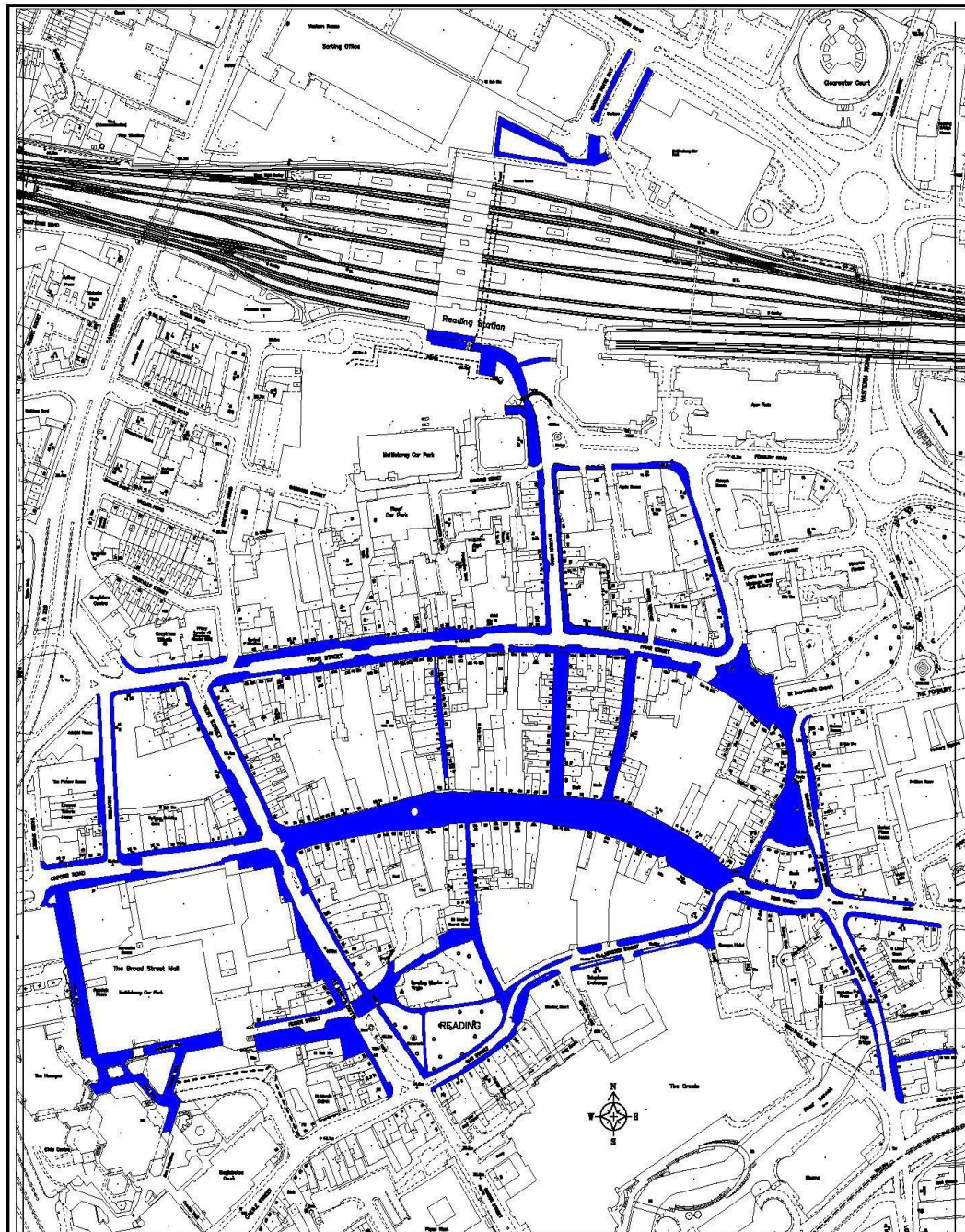
FOOTWAYS - SNOW CLEARING/ PRE-SALTING

READING TOWN CENTRE BLOCK PAVED AREAS (TREATMENT WITH PROPRIETARY MATERIAL/SALT/GRIT) AS SHOWN ON DRAWING NO. RBC/WM/001A INCLUDED IN THIS APPENDIX.

STREET NAME	SECTION
Broad Street	All
Butter Market	All
Chain Street	All
Cheapside	All
Cross Street	All
Duke Street	King Street to Star Lane
Dusseldorf Way	All
Friar Street	Part - Block Paved Areas only
Gun Street	All
Hosier Street	All
King Street/Kings Road	Part - Minster Street to Abbey Square
Minster Street	All
Market Place	All
Queen Victoria Street	All
Queen's Walk	All
Reading Station	Part - Defined pedestrian route swathe on public highway from Station Road to Station Hill (Taxi Rank shelter) via pedestrian ramp and continuing to pedestrian underpass (south side). Also from pedestrian underpass (north side) to Trooper Potts Way (bus shelters).
St Mary's Butts	All
Station Road	All
Union Street	All
West Street	All

FOOTWAYS - SNOW CLEARING/ PRE-SALTING CONT'D...

DRAWING NO. RBC/WM/001A - TREATED FOOTWAY AREAS



Crown copyright and database rights 2019 Ordnance Survey 100019672



Reading
Borough Council

Working better with you

Department of Economic Growth &
Neighbourhood Services
Civic Offices
Reading RG1 2LU

CAD DRAWING LOCATION:

project TOWN CENTRE WINTER MAINTENANCE

Drawing TREATED FOOTWAY AREA

drawn E.O	checked C.C	approved S.S	date 24.10.2019
--------------	----------------	-----------------	--------------------

scale 1:4000	drawing no. RBC/WM/001A
-----------------	----------------------------

APPENDIX F

READING BOROUGH COUNCIL CALL OUT FACILITIES

OUTSIDE OFFICE HOURS

Call 0118 937 3787 (*Calls are charged*)

GRIT BIN LOCATIONS

AREA	ROAD	LOCATION	BINS
North	Blenheim Road, Caversham	Facing junction with Oakley Road	1
North	Brill Close	Top of Close. Outside No. 25	1
North	Christchurch Footbridge	South side of footbridge	1
North	Crawshay Drive	Junction with Kidmore End Road. Adjacent to Street Nameplate	1
North	Eliot Close	Junction with Grove Hill	1
North	Fallowfield Close	End of wooden fence part way down Close	1
North	Glenrhondda	Near No. 14	1
North	Gravel Hill	Opposite Numbers 31 & 33 near Merthyr Vale junction.	1
North	Grove Hill	Mid way. Against high wall	1
North	Hemdean Road	Near Badgers Rise	1
North	Highdown Hill Road	Junction with Soane End (Private Drive)	1
North	Horse Close	On island near No. 26	1
North	Hunters Chase	Adjacent to lamp column No. 12	1
North	Keston Close	Junction with Donegal Close. (Right hand side)	1
North	Luscombe Close	Back against picket fence line. Right hand side	1
North	Picton Way	Junction mid-way up hill. Adjacent to Street Nameplate	1
North	Ruskin	On bend	1
North	Russet Glade	Mid-way at brow of hill	1
North	Scott Close	Adjacent to lamp column. Against brick wall	1
North	Sheriden Avenue	Outside No. 2 at junction with Hemdean Road	1
North	Surley Row	Junction with Sheep Walk	1
North	Tredegar Road	By railings	1
North	Tredegar Road	Junction with Glenrhondda	1
North	Tymawr	Opposite No. 21 (Off Hunters Chase)	1
North	Upper Warren Avenue	Near junction with St Peters Avenue	1
West	Brooksby Road	Junction with Juniper Way. Outside No. 110 in grass verge	1
West	Calder Close	On corner of junction	1
West	Carlisle Road	Junction with A329	1
West	Dudley Close	Near junction with Armour Hill	1
West	Dulnan Close	Near Elderly Persons flats	1
West	Elsley Road	Junction with Oxford Road. In grass verge at end of footway	1
West	Oak Tree Road	Opposite Numbers 49 & 51	1
West	Little Oaks Drive	At junction with Oaks View	1

West	Pottery Road	Near junction with Dresden Way	1
West	Rissington Close	By lamp post outside No. 5	1
West	Rodway Road	At corner of Derwent Avenue	1
West	Romany Lane	Junction Romany Close	1
West	Sandgate Avenue	Near junction with Grasmere Avenue	1
West	Taff Way	Near junction with Dee Road	1
West	Thurso Close	Dee Road Estate. In grass verge opposite block of flats	1
West	Ullswater Drive	Junction with Elsley Road	1
South	Alpine Street/Elgar Road	Back against gable wall of No. 25 Elgar Road	1
South	Barnsdale Road	Opposite Windermere Road junction in grass verge	1
South	Birdhill Avenue	Junction with Cressingham Road	1
South	Blagdon Road	i) 1no. near Cherry Grove junction. ii) 1no. opposite Bankside Close. Both i) & ii) secured to single steel posts	2
South	Brybur Close	Junction with Winton Road	1
South	Ennerdale Road	Corner Northcourt Avenue	1

(All of the above grit bins have achieved a score of at least 60 out of a total of 85 points to qualify).

LOCATION OF STRUCTURES TO RECEIVE 'DOUBLE PRE-SALT' SALTING

ROAD NO	LOCATION	STRUCTURE
A329	Watlington Street	River Kennet Overbridge
A329	King's Road	River Kennet Overbridge
A329	Watlington Street Northbound	Kennet Canal Overbridge
A329	Watlington Street Southbound	Kennet Canal Overbridge
A329	IDR Eastbound	Mill Lane Flyover
A329	IDR Westbound	Mill Lane Flyover
A329	Chatham Street Eastbound	IDR Overbridge
A329	Chatham Street Westbound	IDR Overbridge
A329	Castle Hill Eastbound	IDR Overbridge
A329	Castle Hill Westbound	IDR Overbridge
A33	A33 Northbound	River Kennet Overbridge
A33	A33 Southbound	River Kennet Overbridge
A33	A33 Northbound	Foundry Brook Overbridge
A33	A33 Southbound	Foundry Brook Overbridge
A33	M4 Junction 11 West	Motorway Overbridge
A33	M4 Junction 11 East	Motorway Overbridge
A4	Berkeley Avenue	A33 Relief Road Overbridge
A4	Bath Road	Rail Overbridge
A4155	Bridge Street Caversham	River Thames Overbridge
B3345	George Street Caversham	River Thames Overbridge

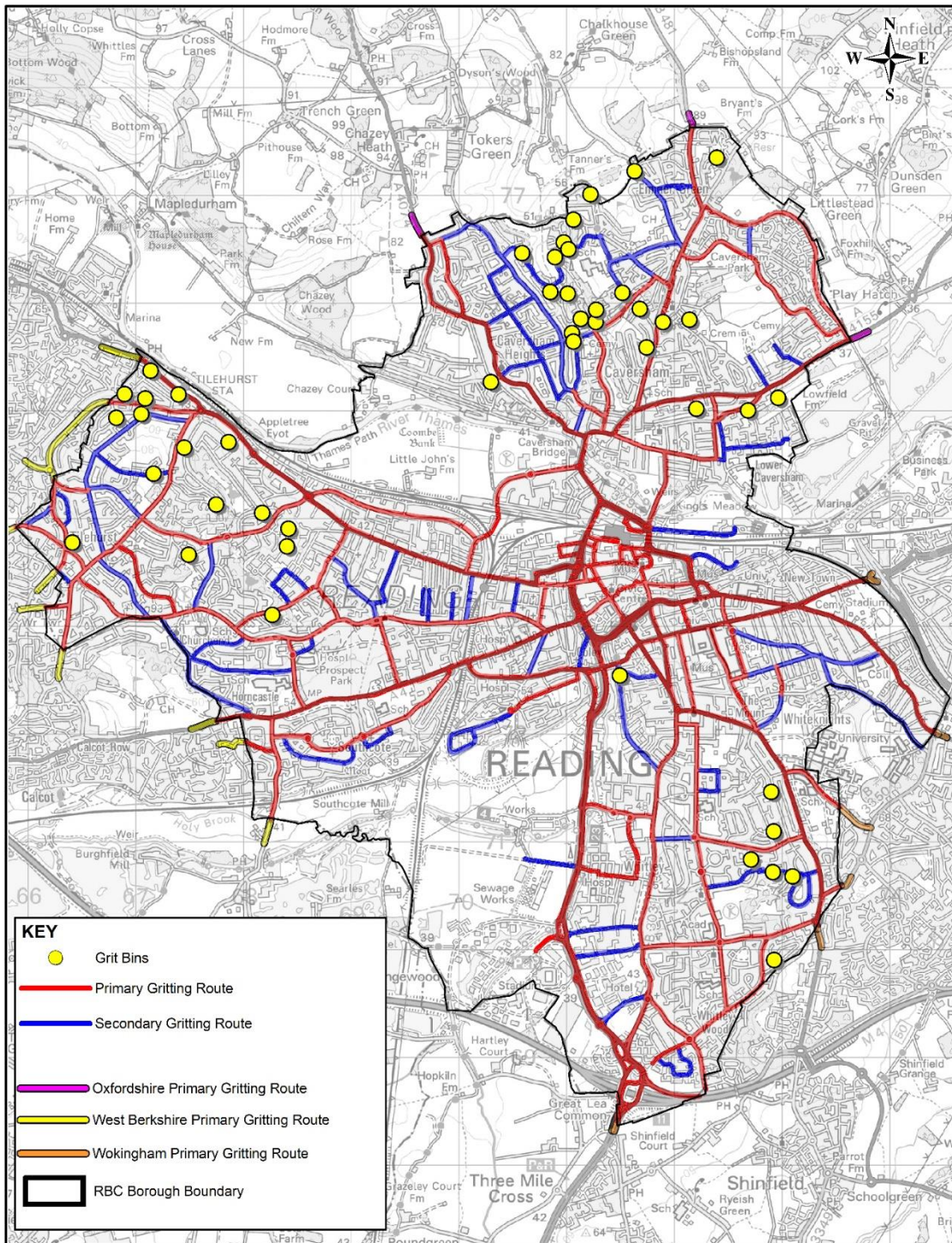
WINTER SERVICE CROSS BOUNDARY ARRANGEMENTS

The cross-boundary arrangements have been reviewed and risk assessed.

Reading Borough Council will salt up to a point beyond the Borough boundary where it is safe for the gritter vehicle to turn around. With agreement, the neighbouring Councils are similarly working to ensure that all of the cross-boundary highway network is treated.

This does not constitute any form of agreement or responsibility for the treatment of the highway network outside the Borough boundary, it is merely to ensure full coverage of the Council's salting network.

PLAN SHOWING SALTING NETWORK/ROUTES AND LOCATION OF GRIT BINS



Title: **Winter Salting Routes 2022/2023.**

Drg.No.:

Date: 26/10/2022

Scale at A4: 1:46000

Produced by GIS & Mapping Services

Ref: G:\Winter Gritting_2022.WOR



© Crown copyright and database rights 2022 Ordnance Survey 100019672

CIRCULATION LIST**1 Adjoining Highway Authorities**

- 1.1 Wokingham Borough Council
Shute End
PO Box 153
Wokingham
RG40 1WL
0118 9746000
- 1.2 West Berkshire District Council
Council Offices
Market Street
Newbury
RG14 5LD
01635 551111
- 1.3 Oxfordshire County Council
Director of Environmental and Economy
Speedwell House
Speedwell Street
Oxford OX1 1NE
01865 815700

2 Emergency Services

- 2.1 Thames Valley Police
Police Headquarters
Kidlington
Oxford
OX5 2NX
- 2.2 Royal Berkshire Fire and Rescue Service
Newsham Court
Pincent's Kiln
Calcot
Reading
RG31 7SD
0118 945 2888
- 2.3 Royal Berkshire Ambulance NH Trust
44 Finchampstead Road
Wokingham
Berkshire
RG40 2NN
0118 9365
500

CIRCULATION LIST CONT'D.

3 Highways England's Agents

EM Highway Services Ltd.
 Rosalind House
 Jays Close
 Viabes Business Park
 Basingstoke
 Hampshire. RG22 4BS

4 Media Organisations

4.1 BBC Radio Berkshire
 550 Thames Valley Park Drive
 Reading. RG6 1PT_
radio.berkshire.news@bbc.co.uk

4.2 Heart FM
 PO Box 2020
 Reading
 Berkshire. RG31 7FG
thamesvalley.news@heart.co.uk

4.3 The Breeze (Radio Station)
 Suite 2
 Paddington House
 Festival Place
 Basingstoke. RG21 7LJ
tvnews@celador.co.uk

5 Motoring Organisations

5.1 RAC
 Public Affairs Dept
 114 Rochester Row
 London

5.2 Automobile Association
 Fanum House
 52 London Road
 Twickenham
 Middlesex

6 Councillors Suite

Reading Borough Council
 Civic Offices
 Bridge Street
 Reading. RG1 2LU

REFERENCES

- Highways Act 1980.
- Highways Winter Maintenance, ICE 2000.
- Well Maintained Highways - Code of Practice for Highway Maintenance Management 2005 (revised 2009, 2010 & 2011).
- Lessons from the Severe Weather February 2009.
- The Resilience of England's Transport Systems in Winter Interim Report July 2010.
- Quarmby Audit Report December 2010 (revised 2011).
- Well-managed Highway Infrastructure: A Code of Practice - October 2016.
- Winter Service Plan 2023/2024 - Housing Neighbourhoods and Leisure Committee Report - 8th November 2023